

Mini-SG® System

The intelligent, surgery-free dental reconstruction system

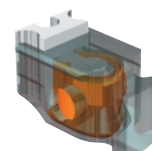
**Gives easy solutions for free-end and insertion situations with perfect aesthetics and excellent long-term results
For happy patients**

Problem



60-year-old patient, the canines and central incisors are the only teeth left in the upper jaw. The roots of the lateral incisors are kept under the prosthesis to prevent resorption. The non-vital

Solution with the Mini-SG® System



Mini-SG® Hinge

teeth are provided with post, core and crown with the Mini-SG® attachment. Pockets are between 2 and 3 mm. The abutment teeth show no mobility.

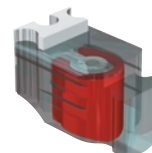
(Dr. F. Ardenois, Department of Prosthetic Dentistry, Catholic University of Leuven; laboratory: L. Beckers, Unident, Leuven)

Problem



69-year-old male patient with edentulous free-end spaces on both sides in the lower jaw. The abutments 44 and 35 have pocket depths between 2 and 3 mm. They are not loose and vital.

Solution with the Mini-SG® System



Mini-SG® F

Particularity: tooth 35 is rotated by 90°. The patient did not want a restoration of the front teeth.

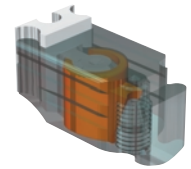
(Prof. Dr. M. Wichmann, Dr. H. Rinne, Department of Prosthodontics, University Erlangen; laboratory: E. Schütz, Erlangen)

Problem



68-year-old female patient with edentulous free-end spaces on both sides in the upper jaw; an edentulous space 12. Present restoration: partial denture with clasps on 14, 13, 23 and 24. 14 was

Solution with the Mini-SG® System



Mini-SG® PLUS

extracted for endodontic reasons. Abutments 13 and 24 vital, pocket depths 2 to 3 mm, degree of tooth mobility 0.

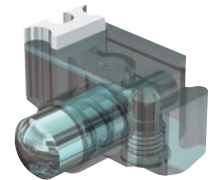
(Dr. Dr. J. Fischer, Department of Removable Prosthodontics, University Berne; laboratory: Hanspeter Schär, Berne)

Problem



54-year-old female patient with a one-sided edentulous free-end space on the right and an edentulous space on the left in the lower jaw. The front teeth are vital and not loose. The pockets depths are less than 3 mm. The lower front teeth were blocked from

Solution with the Mini-SG® System



Mini-SG® Latch

32 to 44. For the connection between abutment and the unilateral free-end saddle a Mini-SG® Latch combined with a milled brace support on tooth 44 was used.

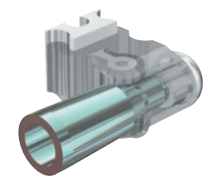
(Prof. Dr. M. Wichmann, Dr. H. Rinne, Department of Prosthodontics, University Erlangen; laboratory: E. Schütz, Erlangen)

Problem



50-year-old female patient with a one-sided edentulous space in the lower jaw.

Solution with the Mini-SG® System



Mini-SG® V

Tooth 38 shows a mobility of II. Both abutments are vital and were provided with the Mini-SG® V. The pockets have a depth of 2 – 3 mm.

(Prof. Dr. M. Wichmann, Dr. H. Rinne, Department of Prosthodontics, University Erlangen; laboratory: E. Schütz, Erlangen)